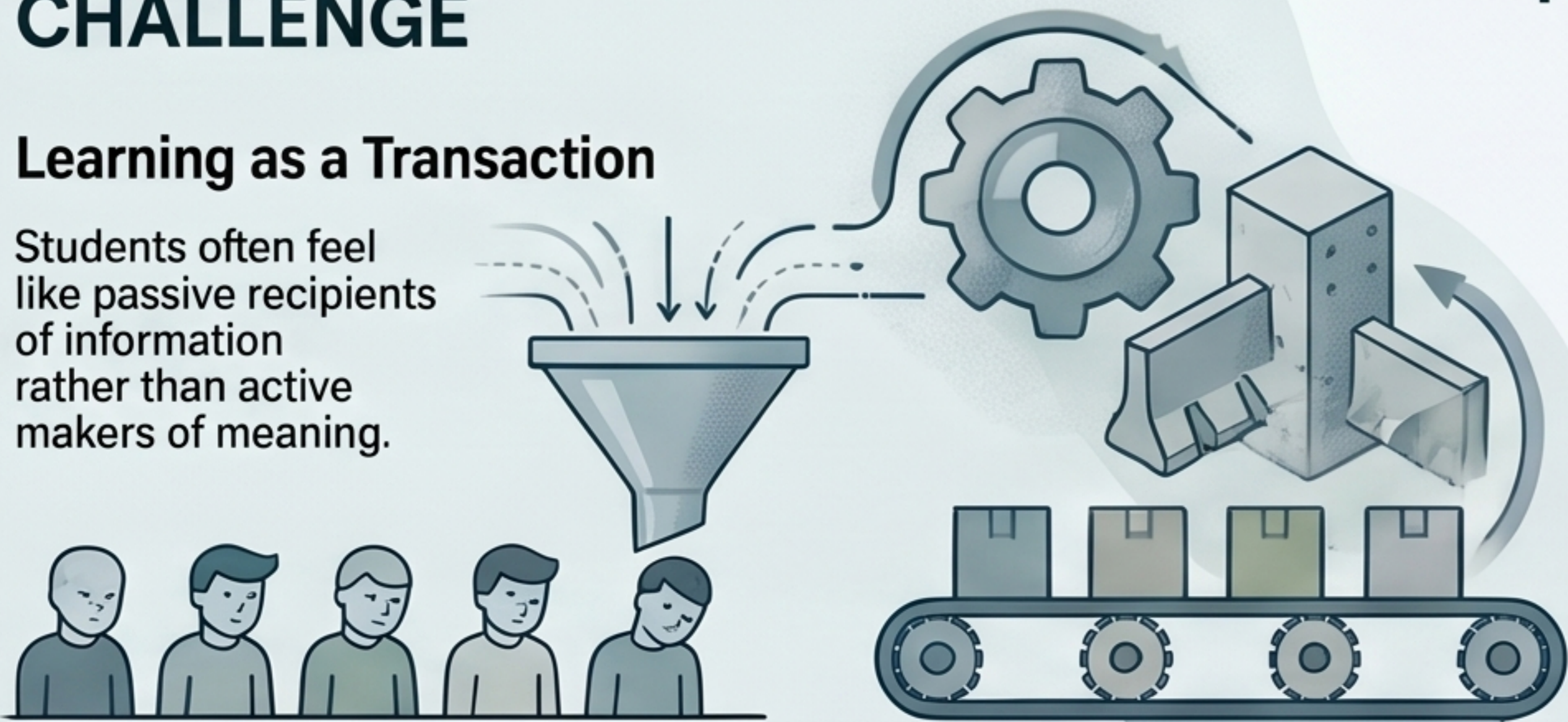


# Rethinking the Middle Years: From Passive Schooling to Active Engagement

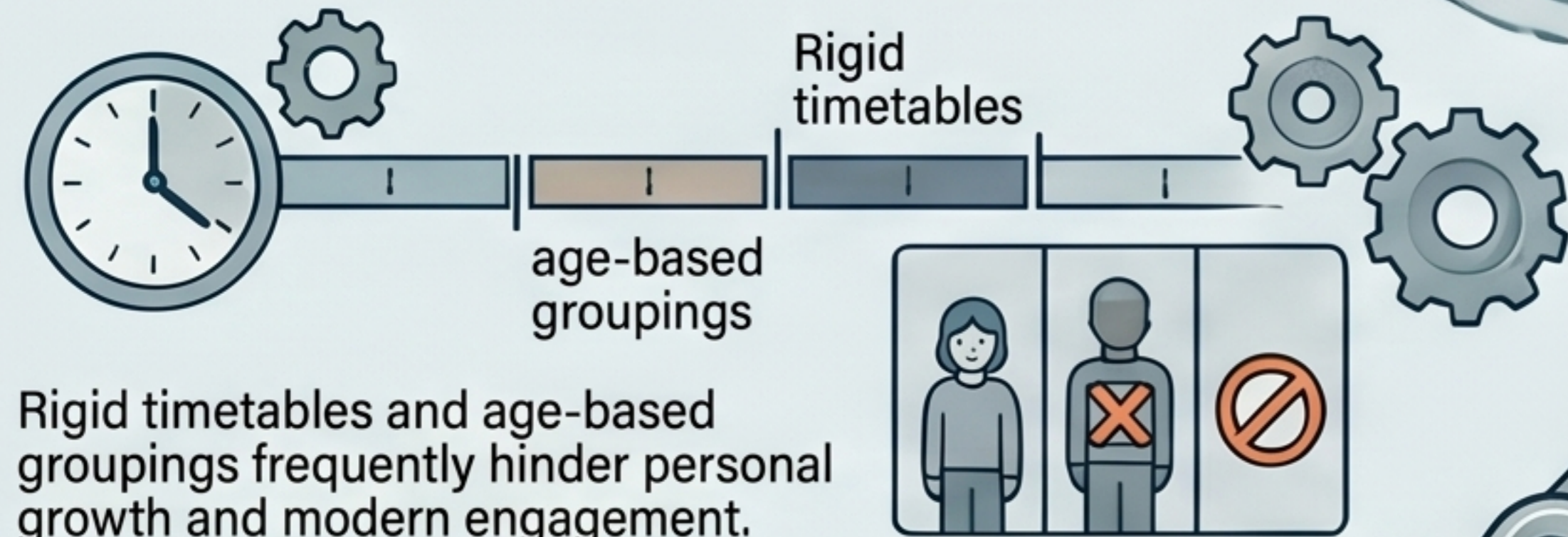
## THE DISENGAGEMENT CHALLENGE

### Learning as a Transaction

Students often feel like passive recipients of information rather than active makers of meaning.

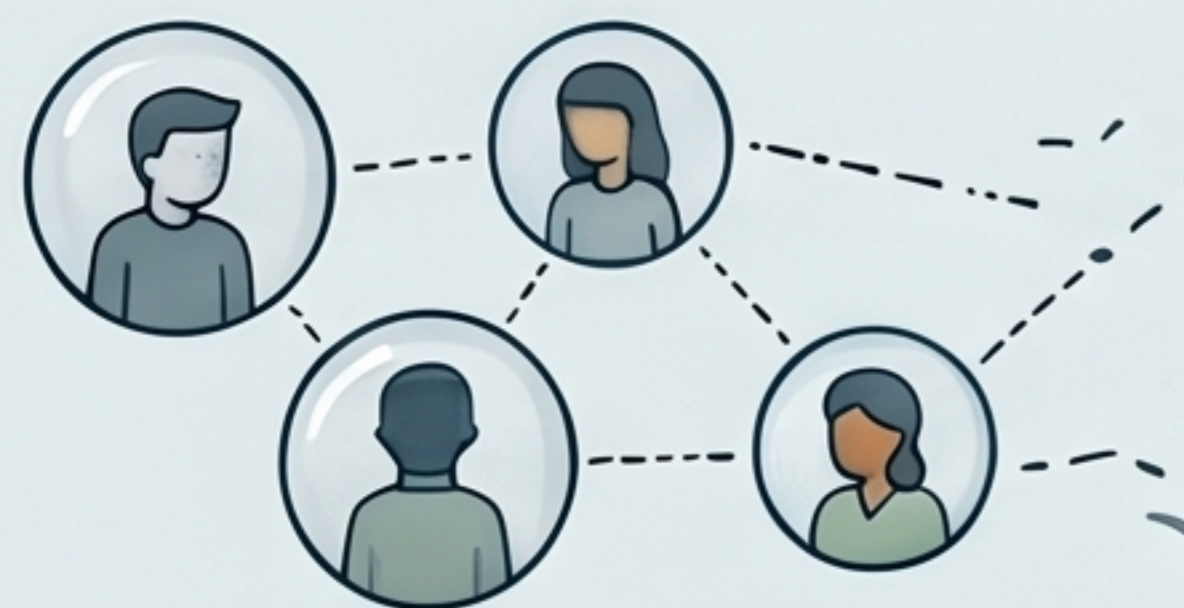


### The 'Machinery' of Schooling



Rigid timetables and age-based groupings frequently hinder personal growth and modern engagement.

### A Crisis of Connection



Many students depict school as isolating, lacking the relational safety required for deep learning.

## TRANSFORMING THE EXPERIENCE

### Engagement is Fundamentally Relational



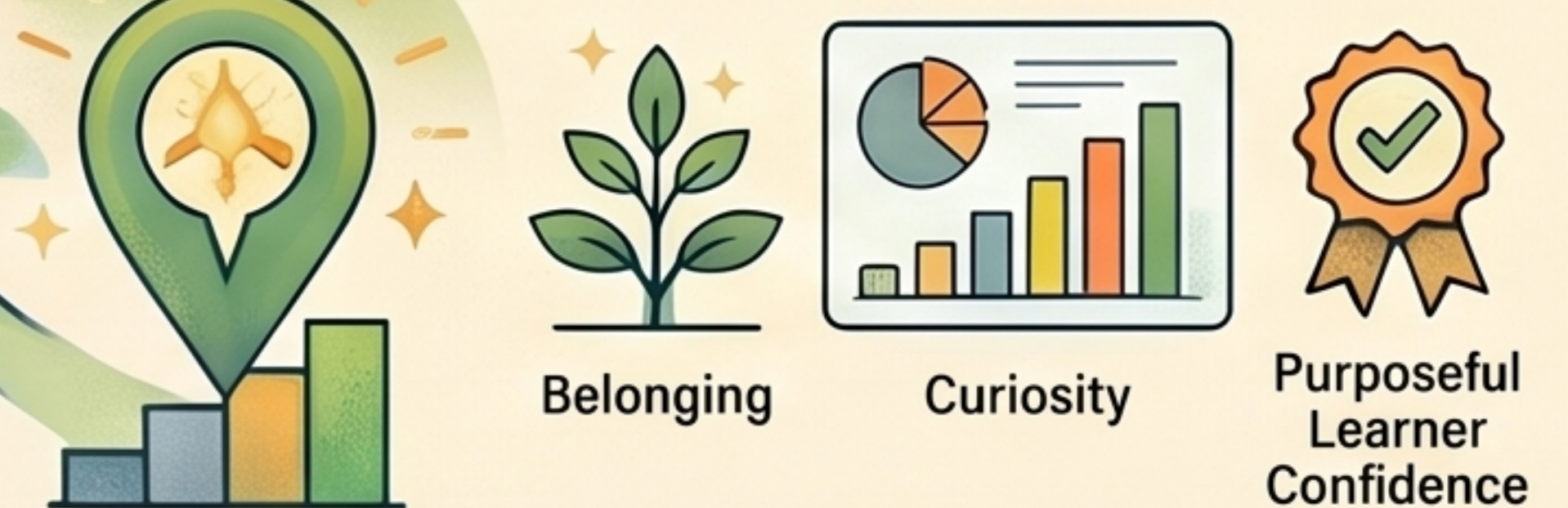
Students must feel known and safe before they can connect with complex curriculum.

### Elevating Student Agency



Students should act as partners in school design, not just sources of feedback.

### Valuing Growth Over Attainment



## FROM PASSIVE SCHOOLING TO ACTIVE ENGAGEMENT

### ENGAGEMENT LEVEL SPECTRUM

